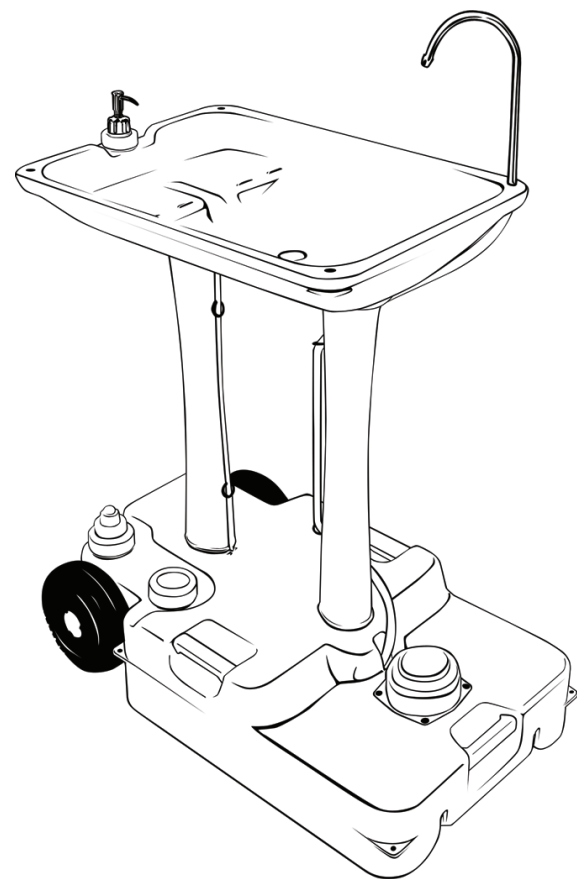




XL PORTABLE OUTDOOR SINK

USER GUIDE

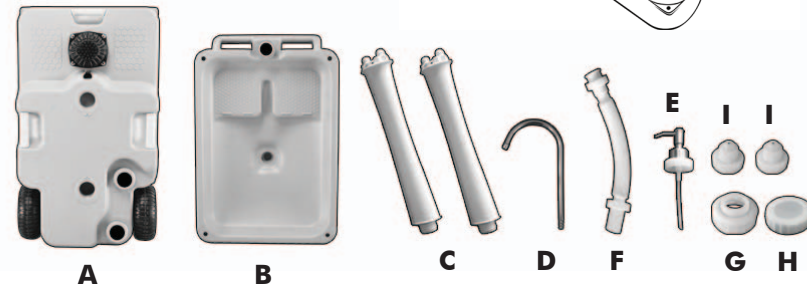
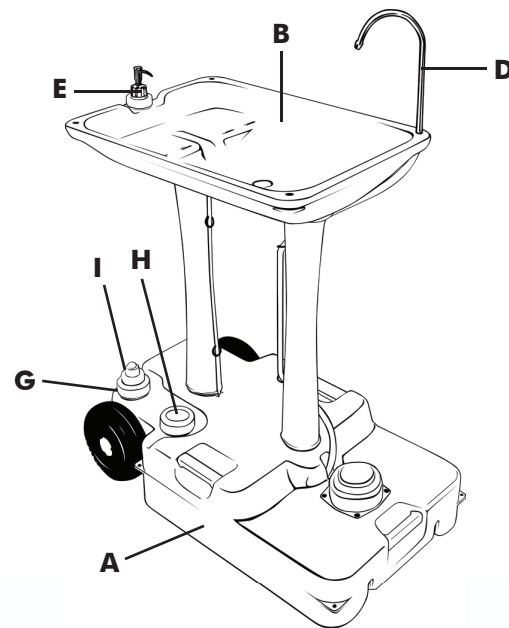
HCCHH7702



Thank you for purchasing the Hike Crew XL Portable Outdoor Sink. This User Guide is intended to provide you with guidelines to ensure that operation of this product is safe and does not pose risk to the user. Any use that does not conform to the guidelines described in this User Guide may void the limited warranty. Please read all directions before using the product and retain this guide for reference. This product is intended for household use only. It is not intended for commercial use. This product is covered by a limited one-year warranty. Coverage is subject to limits and exclusions. See warranty for details.

PARTS OVERVIEW

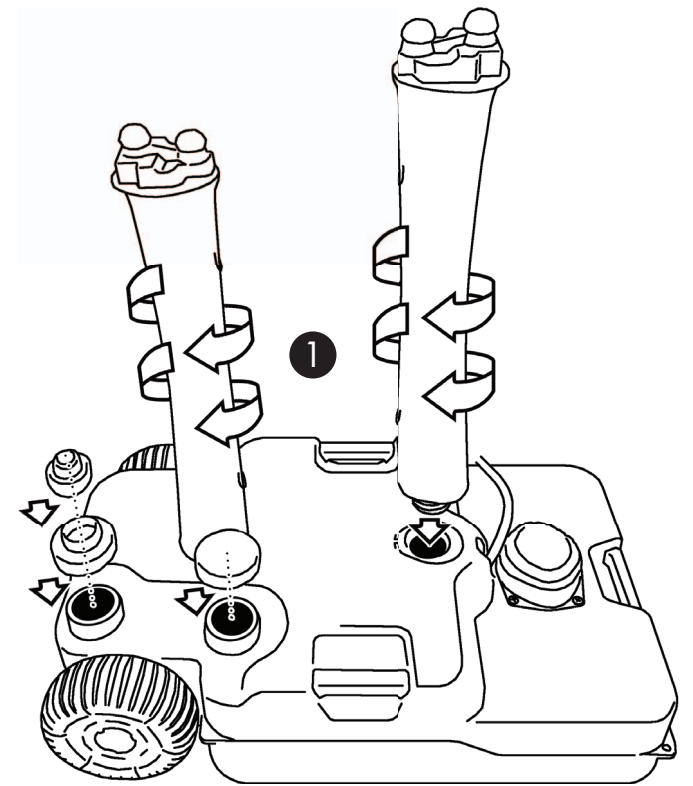
- A. Base Water Tank with Foot Pump and Wheels
- B. Sink
- C. Two (2) Columns
- D. Faucet
- E. Soap Dispenser Pump
- F. Flexible Drain Hose
- G. Adapter M60/M44 mm
- H. M60 mm Cap
- I. Two (2) Air Inlet Caps



ASSEMBLY INSTRUCTIONS

NOTE: Always assemble appliance according to the instructions.

1. Place the base water tank (A) on a flat, level surface. Screw both columns (C) into the base water tank (A) until they are in the locked position.

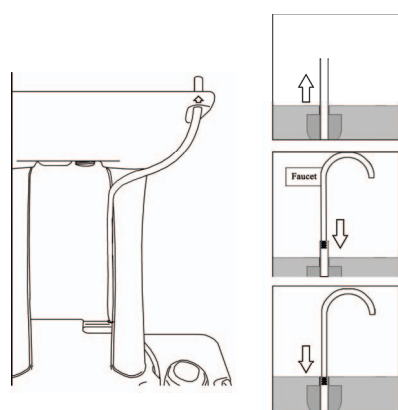
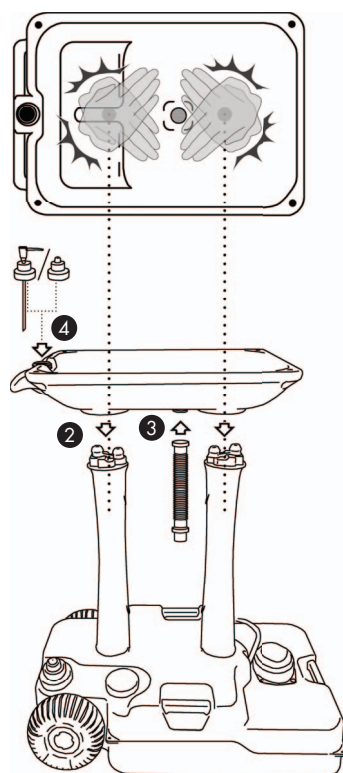


2. Attach the sink (B) onto the two columns (C), making sure the sink is locked firmly in place.

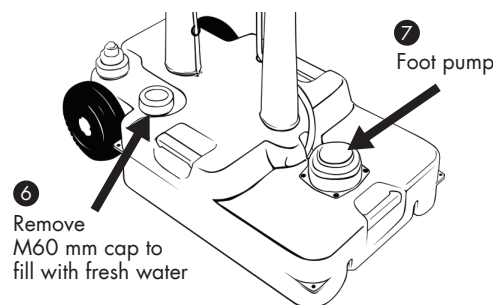
3. Screw the flexible drain hose (F) onto the bottom of the sink (B).

4. Fill the soap compartment located on the sink (B) with liquid soap. Then, screw in the soap dispenser pump (E) onto soap compartment. NOTE: Liquid soap is sold separately; it is not included.

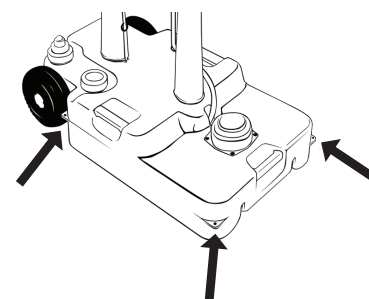
5. Insert faucet (D) onto water tube that is connected to the base water tank (A). Then, zip tie water tube onto column (C).



6. Unscrew M60 mm cap (H) located on base water tank and fill the base water tank with fresh water.
7. Step on foot pump located on the base water tank (A) to activate the water flow.



NOTE: Base water tank can be fixed into the ground, if necessary, using the four holes at each corner of the tank. Pegs are sold separately; they are not included.



SPECIFICATIONS

Dimensions: 28.3" x 16.5" x 31.5" (72 x 42 x 80 cm)

Weight: 12.1 lbs. (5.5 kg)

Power: Foot pump

Material: High-density polyethylene

Sink size: 19.7" x 15.9" (50 x 40.5 cm)

Water tank capacity: 7.9 gal. (30 L)

Liquid soap tank capacity: 1.3 gal. (5 L)

Water flow per step: 6 oz. (180 ml)

WARRANTY INFORMATION

LIMITED WARRANTY ON HIKE CREW XL PORTABLE OUTDOOR SINK

THIS LIMITED WARRANTY GIVES YOU SPECIFIC LEGAL RIGHTS AND YOU MAY ALSO HAVE OTHER RIGHTS, WHICH VARY FROM STATE TO STATE.

WE WARRANT THAT DURING THE WARRANTY PERIOD, THE PRODUCT WILL BE FREE FROM DEFECTS IN MATERIALS AND WORKMANSHIP.

LIMITATION OF LIABILITY

TO THE EXTENT NOT PROHIBITED BY LAW, THIS WARRANTY IS EXCLUSIVE AND IN LIEU OF ALL OTHER WARRANTIES, ORAL, WRITTEN, STATUTORY, EXPRESS OR IMPLIED. EXCEPT FOR THE EXPRESS WARRANTIES CONTAINED IN THIS LIMITED WARRANTY STATEMENT AND TO THE EXTENT NOT PROHIBITED BY LAW, WE DISCLAIM ALL OTHER WARRANTIES, EXPRESSED OR IMPLIED, STATUTORY OR OTHERWISE, INCLUDING WITHOUT LIMITATION, THE WARRANTIES OF MERCHANTABILITY AND FITNESS FOR A PARTICULAR PURPOSE. SOME STATES DO NOT ALLOW DISCLAIMERS OF IMPLIED WARRANTIES, SO THIS DISCLAIMER MAY NOT APPLY TO YOU. TO THE EXTENT SUCH WARRANTIES CANNOT BE DISCLAIMED UNDER THE LAWS OF YOUR JURISDICTION, WE LIMIT THE DURATION AND REMEDIES OF SUCH WARRANTIES TO THE DURATION OF THIS EXPRESS LIMITED WARRANTY.

OUR RESPONSIBILITY FOR DEFECTIVE GOODS IS LIMITED TO REPAIR, REPLACEMENT OR REFUND AS DESCRIBED BELOW IN THIS WARRANTY STATEMENT.

WHO MAY USE THIS WARRANTY? C&A Marketing, Inc. located at 114 Tived Lane East, Edison, NJ ("we") extend this limited warranty only to the consumer who originally purchased the product ("you"). It does not extend to any subsequent owner or other transferee of the product.

WHAT DOES THIS WARRANTY COVER? This limited warranty covers defects in materials and workmanship of the Hike Crew XL Portable Outdoor Sink (the "product") for the Warranty Period as defined below.

WHAT DOES THIS WARRANTY NOT COVER? This limited warranty does not cover any damage due to: (a) transportation; (b) storage; (c) improper use; (d) failure to follow the product instructions or to perform any preventive maintenance; (e) modifications; (f) unauthorized repair; (g) normal wear and tear; or (h) external causes such as accidents, abuse, or other actions or events beyond our reasonable control.

WHAT IS THE PERIOD OF COVERAGE? This limited warranty starts on the date of your purchase and lasts for one year (the "Warranty Period"). The Warranty Period is not extended if we repair or replace the product. We may change the availability of this limited warranty at our discretion, but any changes will not be retroactive.

WHAT ARE YOUR REMEDIES UNDER THIS WARRANTY? With respect to any defective product during the Warranty Period, we will, at our sole discretion, either: (a) repair or replace such product (or the defective part) free of charge or (b) refund the purchase price of such product if an exchange unit cannot be provided.

HOW DO YOU OBTAIN WARRANTY SERVICE? To obtain warranty service, you must contact us at 1-833-855-1816 or by email at info@supportcbp.com during the Warranty Period to obtain a Defective Merchandise Authorization ("DMA") number. No warranty service will be provided without a DMA number and return shipping costs to our facilities shall be assumed by you, the purchaser. Shipping costs of the replacement unit to you shall be assumed by us.

GET IN TOUCH!

info@supportcbp.com

1-833-855-1816

Hike Crew is a trademark of C&A IP Holdings LLC, in the U.S.

All other products, brand names, company names, and logos are trademarks of their respective owners, used merely to identify their respective products, and are not meant to connote any sponsorship, endorsement, or approval.

Distributed by C&A Marketing, Inc., 114 Tived Lane East, Edison, NJ 08837

Made in China

© 2021. C&A IP Holdings LLC. All Rights Reserved.